

*“Are we there yet?”
Are we there yet?”*

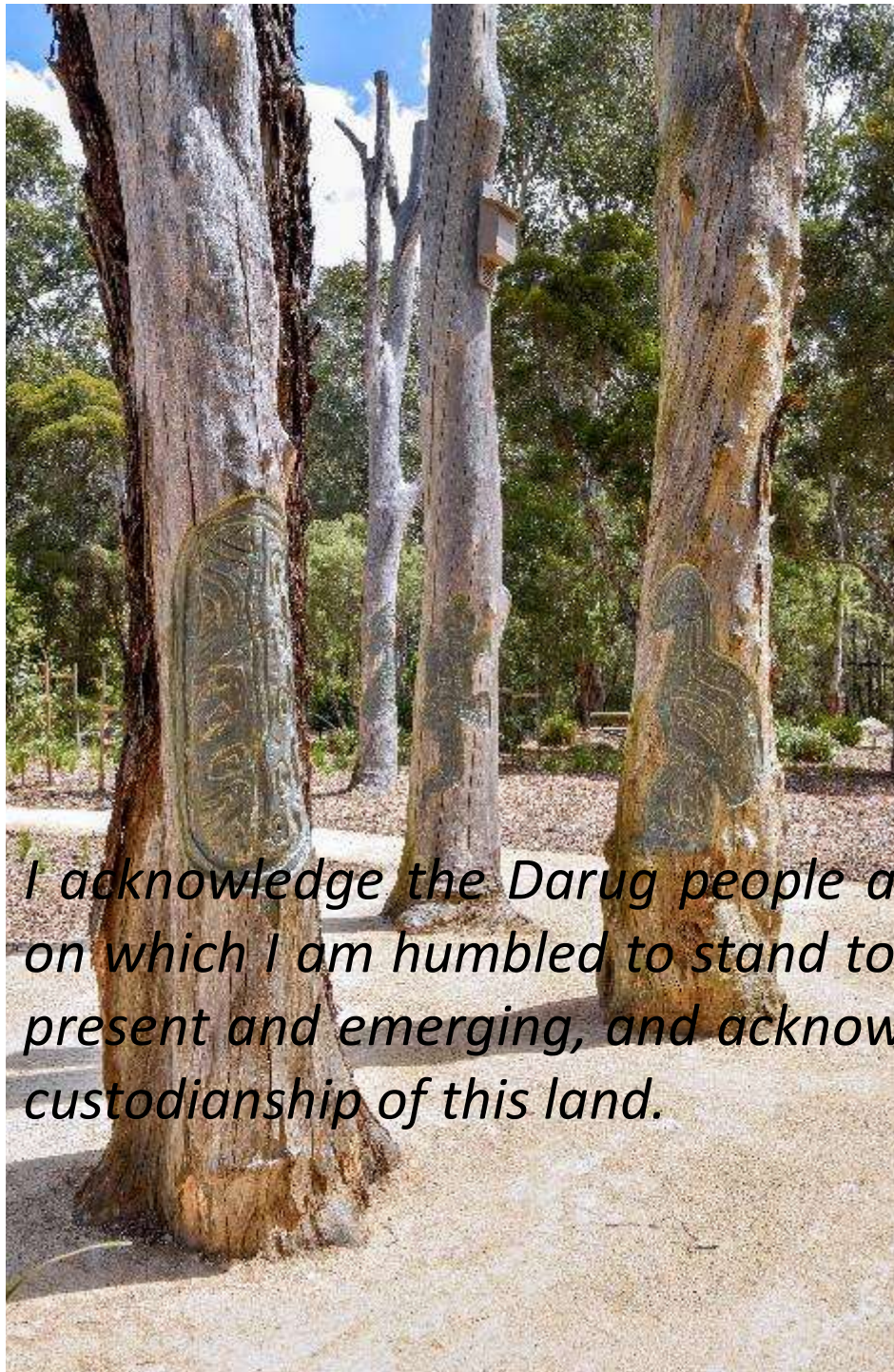
Play in Blacktown City - a journey

Matt O'Connor

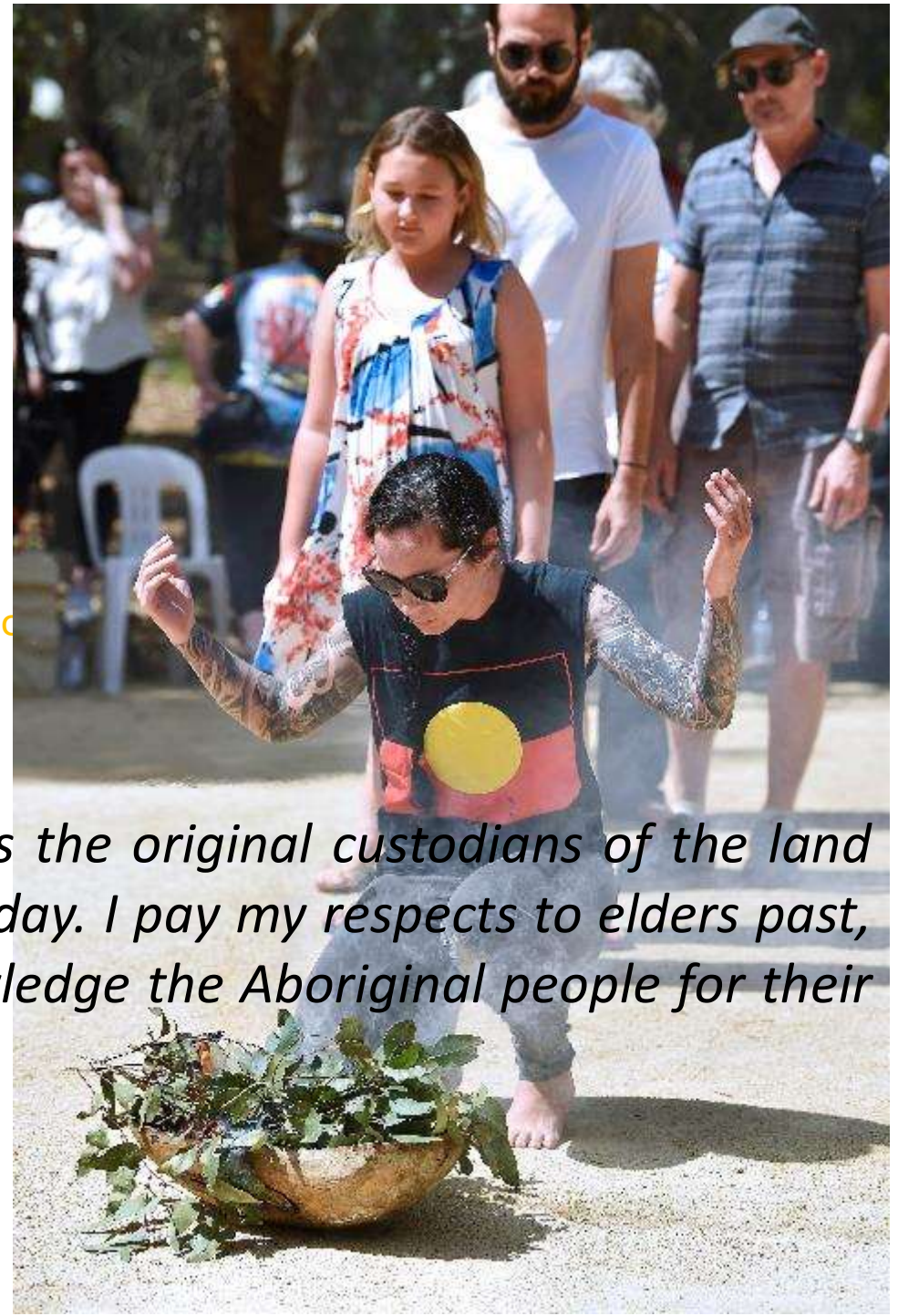
Play Australia
June 2021



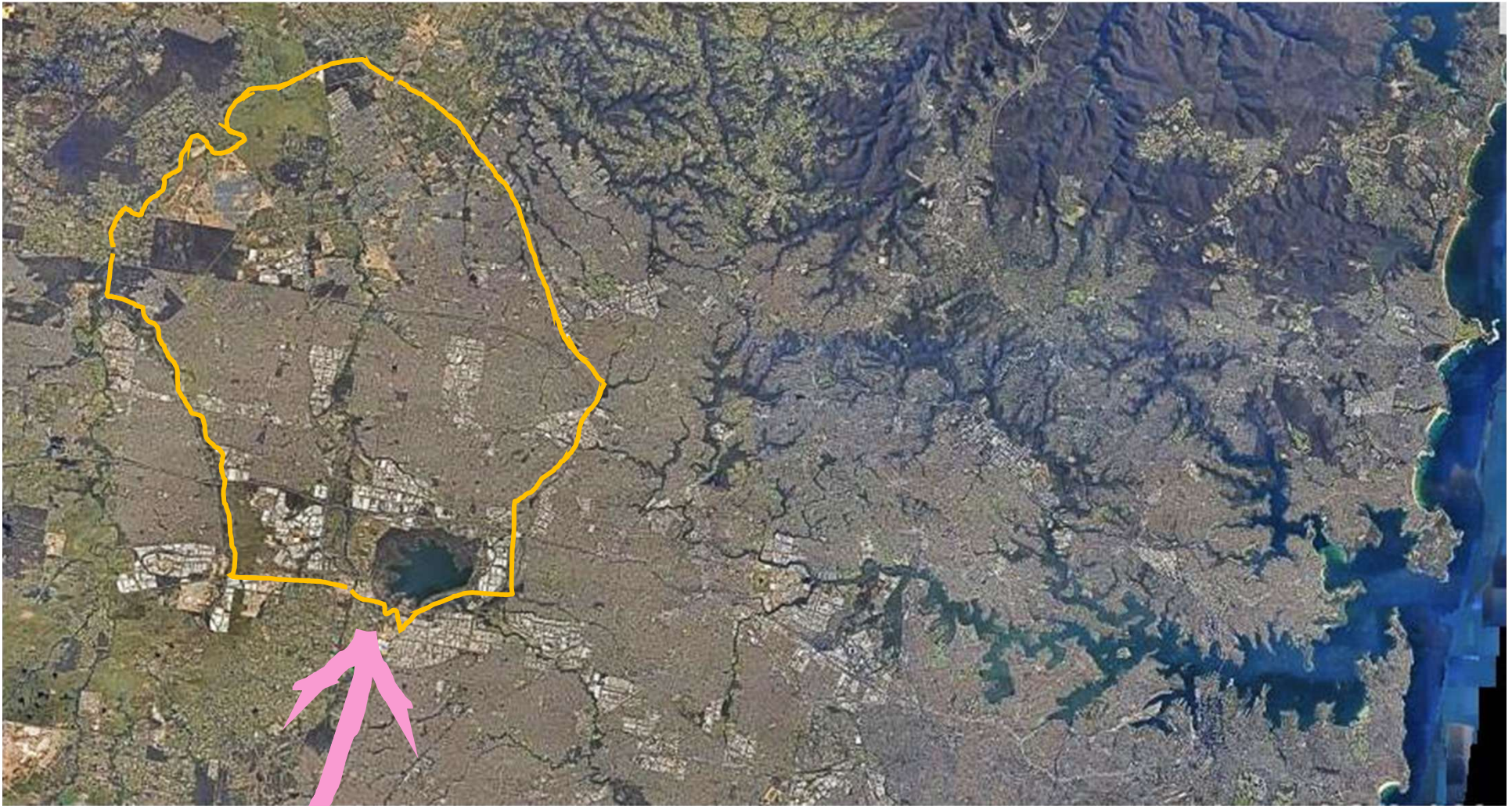
Blacktown
City Council



I acknowledge the Darug people as the original custodians of the land on which I am humbled to stand today. I pay my respects to elders past, present and emerging, and acknowledge the Aboriginal people for their custodianship of this land.







400,000 > 620,000

188 cultures

182 languages

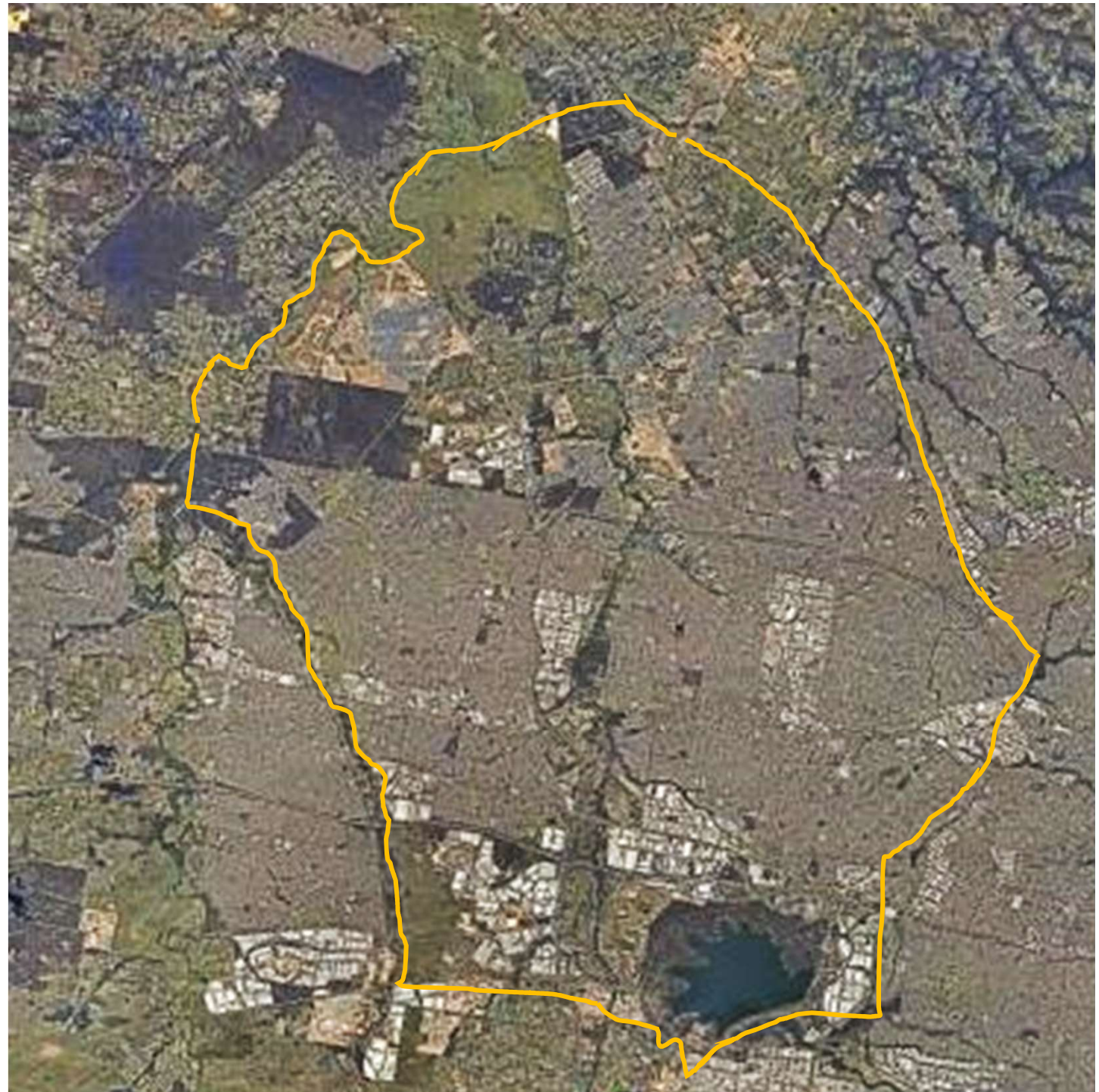
Established and
growing

22.8%: 0-14

55.5%: families
with children

\$789 m budget

Large to small
projects



D|P EN C

RECREATION AND OPEN SPACE STRATEGY

PACE S|P

We will work with the community to create a diverse, accessible, safe and appealing open space network for people of all ages, backgrounds and abilities to encourage a vibrant, healthy lifestyle.

5,513 ha

OPEN SPACE¹



PARKS

1,770 ha

212

COURTS

Includes tennis, netball, basketball and multi-use⁴



330+

PLAYGROUNDS⁵



³ 3 SKATEPARKS



⁷ 5 AQUATIC FACILITIES⁷



76

SPORTS GROUNDS²

96

FITNESS STATIONS⁶

across 28 parks⁴



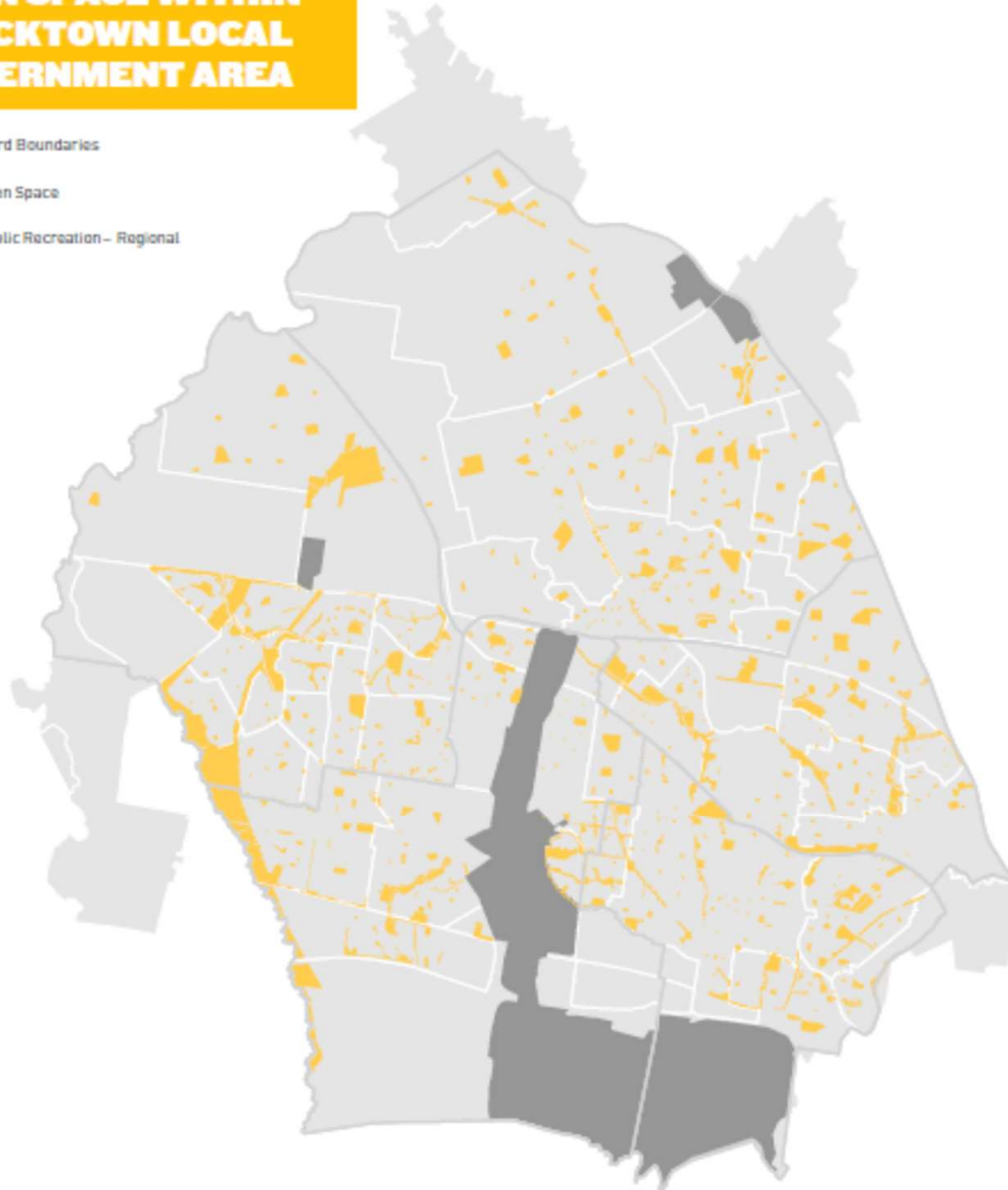
3

INDOOR SPORT FACILITIES

BLACKTOWN CURRENTLY HAS A
NETWORK OF OVER 900 PARKS.
THE NORTH WEST GROWTH CENTRE
WILL ADD ABOUT **150 NEW PARKS**
TO THIS NETWORK.

OPEN SPACE WITHIN BLACKTOWN LOCAL GOVERNMENT AREA

- Ward Boundaries
- Open Space
- Public Recreation – Regional

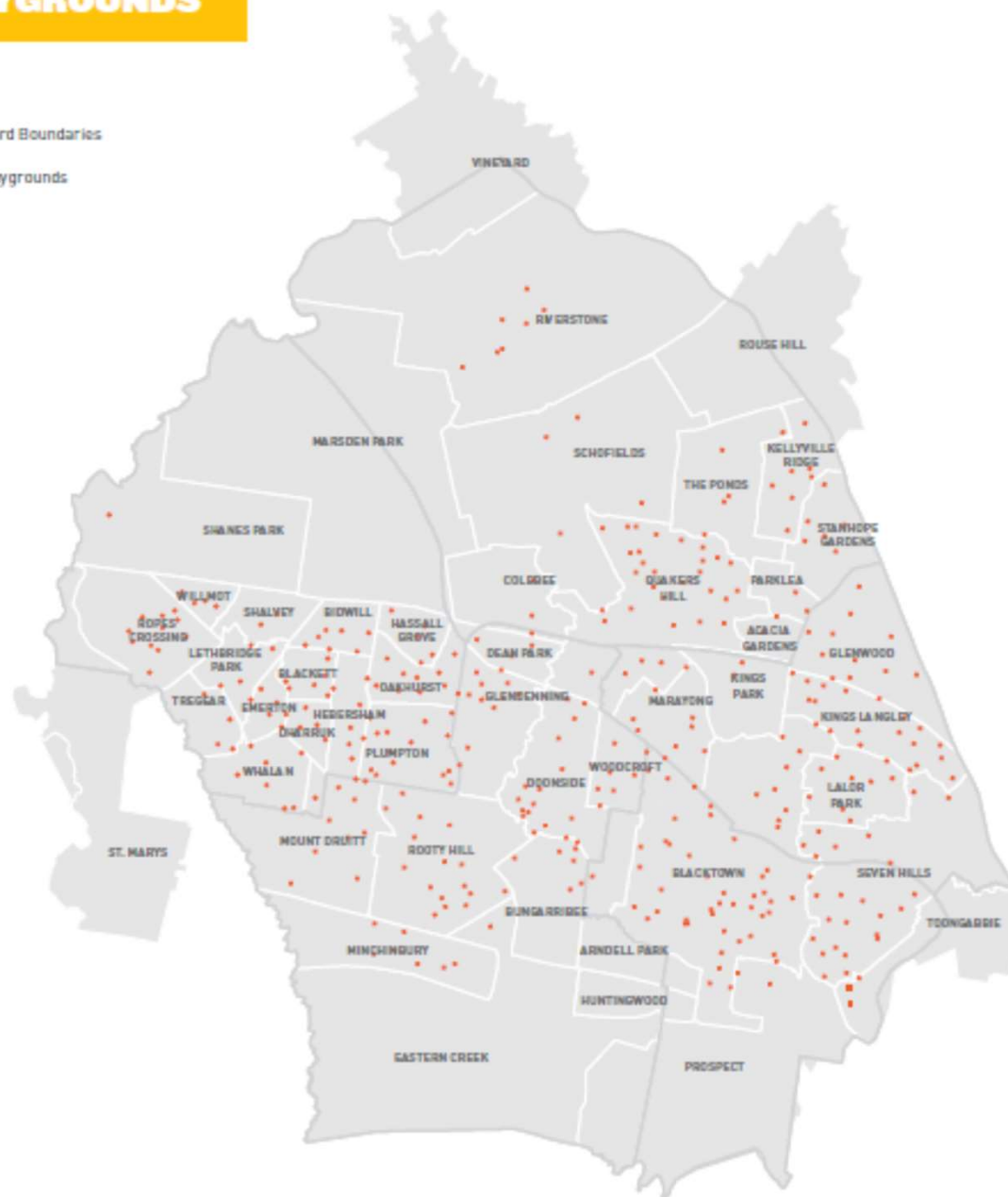




PLAYGROUNDS

— Ward Boundaries

● Playgrounds



PLAYGROUNDS



Playgrounds

Playgrounds to be provided in accordance with Council's endorsed Playground Strategy (2012). In summary:

- Local playgrounds – to be provided at suitable sites and within 500 m walking distance
- Neighbourhood playgrounds – to be provided as 1 per ward
- City-wide playgrounds – provided at Nurragingy Reserve and Blacktown Showground.

Design principles and guidelines such as accessibility, access to drinking water, fencing, etc. are considered in the development of new and existing play spaces.

ACTION PLANS

PARKS AND RECREATION

OBJECTIVES

ACTIONS

1. Enhance the quality of our parks.

- 1.1. Continue the planning of parks in the North West Growth Centre (pending available funding).
- 1.2. Complete designs for a minimum of 4 parks per year to accommodate current and future population needs (pending available funding).
- 1.3. Develop a standard set of park furniture.

2. Provide an equitable spread of quality playgrounds to meet present and future needs of our community.

- 2.1. Complete designs for a minimum of 4 playgrounds per year (pending available funding).
- 2.2. Complete designs for Council endorsed neighbourhood parks (pending available funding).
- 2.3. Increase informal and imaginative play opportunities to complement formal playground facilities (pending available funding).
- 2.4. Increase accessible play options for our children with disabilities in selected locations.
- 2.5. Review Council's position and develop a policy on the provision of shade structures and fencing at playgrounds.

3. Provide a diverse range of recreation opportunities that will benefit the health and wellbeing of our community.

- 3.1. Formalise provision of park for fitness stations to guide equitable spread for our community.
- 3.2. Increase provision of fitness stations.
- 3.3. Review opportunities to increase provision for leisure based sports using up to date census data to ensure facilities are located where highest demand may exist (e.g. mountain biking, cycling, skating, running, badminton, volleyball, outdoor table tennis).
- 3.4. Review the provision of off leash dog areas, and develop provision guidelines.
- 3.5. Investigate opportunities for recreation in and around Prospect Recreation Reserve.

4. Provide opportunities to capture the shift towards informal sport and recreation activities.

- 4.1. Discuss the need for flexible, unstructured sports with state sporting organisations and local associations to encourage participation in these activities.

5. Improve our understanding of recreation spaces for young people in our city.

- 5.1. Undertake consultation with youth, related groups and agencies to gain an understanding of their recreation and social needs in order to create a youth recreation strategy for the city.
- 5.2. Expand the provision of youth spaces from skate parks and sporting courts to areas which engage youth of all ages and abilities such as parkour areas, fitness equipment, dance spaces and areas to simply sit and socialise.

Play in Blacktown City – a journey

Pre-2010: meteorite playgrounds





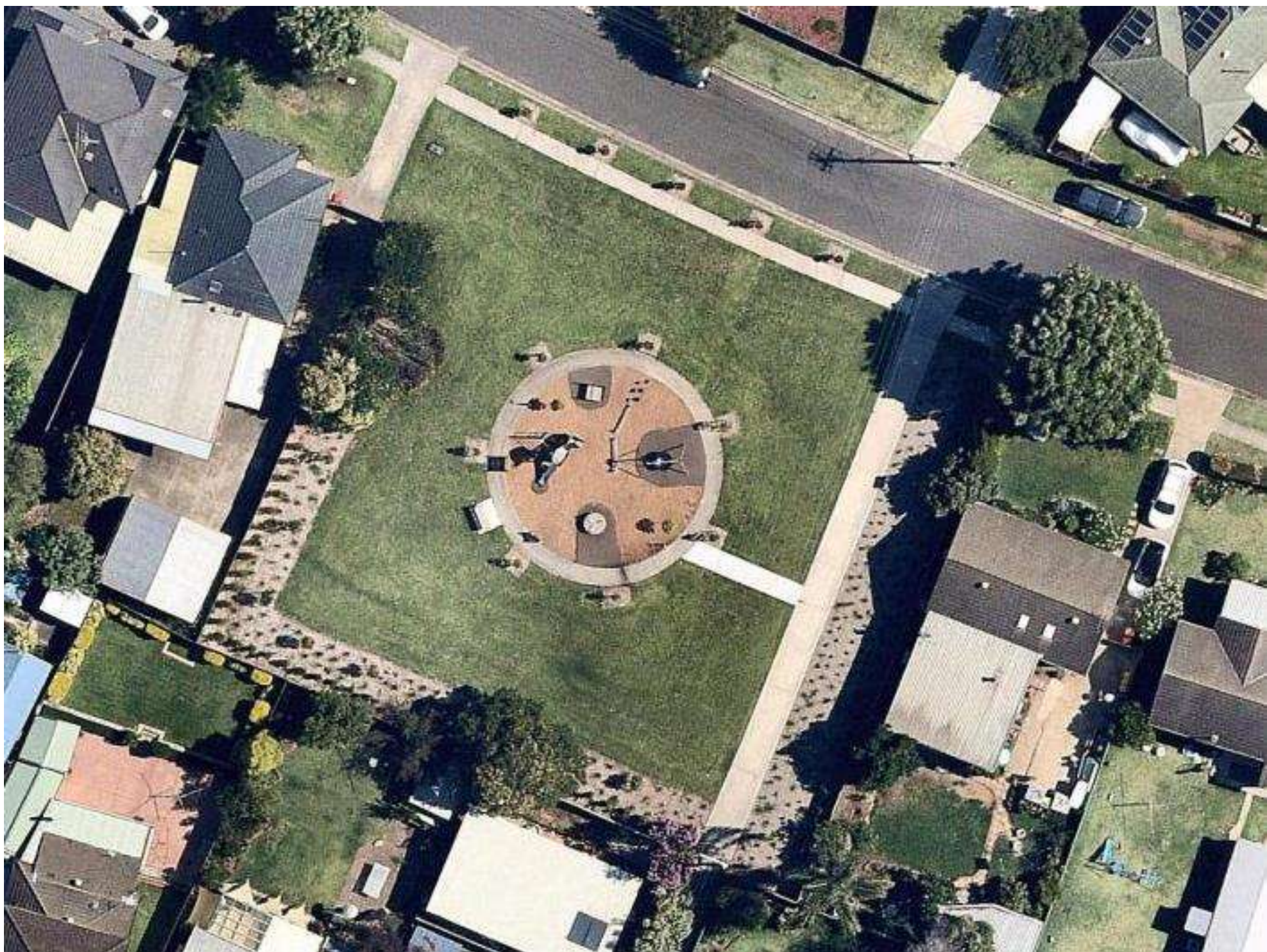


Play in Blacktown City – a journey

2012 - 2017: Citywide Playground Strategy

(Playgrounds were not captured as an asset let alone recognised as critically important community infrastructure)





Play in Blacktown City – a journey

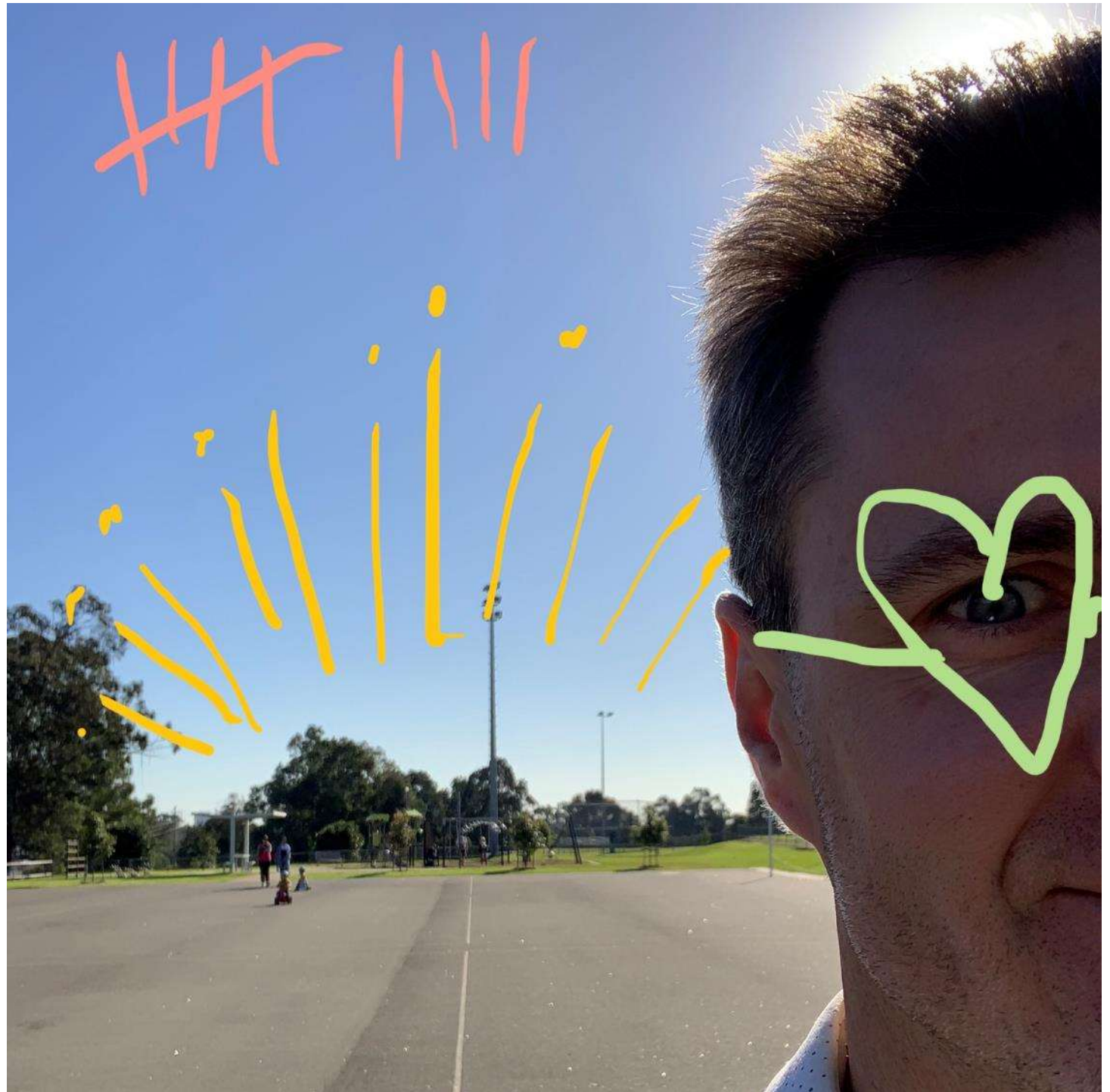
2019:



Play in Blacktown City – a journey

2012 - 2021: Refinement of community (and other) consultation processes

- 2012: none
- 2016: mailout to surrounding residents within 500 m walking catchment
- 2017: direct engagement with surrounding schools
- 2018: Blacktown City Councillor engagement:
 - (Annual investment in playground upgrades, Range of playgrounds required, Acknowledge informal play, Inclusion! Shade provision, Fencing)
- 2019: Change of language – playspace
- 2020: On site announcements, events, online 'Have Your Say'
- 2021: Intensify child-friendly consultation initiatives ...







Fiona Robbe Landscape Architecture

Evolution Walkway



The 'Evolution Walkway' is an accessible and immersive journey to a canopy experience. The walkway will tell a story of the evolution from land to sky and play with varying degrees of enclosure.

The walkway is enclosed with wire frame allowing for panoramic views of the playground and studded with artworks casting shadows and artwork down onto the walkway. At the destination there is a hammock like net allowing children to lean back and comfortably observe the canopy above.

The grade of the pathway is Max 1:14 with landings every 7m and 9m allowing users in wheelchairs to experience with ease. The 'Evolution Walkway' provides a variety of play experiences along one circuit, allowing for the user to choose their play.



AECOM

Client: Blacktown City Council Project Name: Nurraging Reserve
Date: 20/05/21 Project Number: 60657803

Proposed Elements **SK03**



2010



2014



2019



2020





10/16 10:44 AM



I counted 51 people at R883 last Sunday afternoon... cricket, football, soccer, picnics, walking, kites, bikes all happening... safe to say that its been popular so far.





Play in Blacktown City – a journey

Older kids, youth spaces?



Aaron Wallis, Playce

Riverstone Park Youth Precinct

Concept Design - Masterplan
December 2019 - Draft Issue



1:500 @A3
0m 10m 25m



Blacktown
City Council

PLA'CE

Features

- ① **Resurfaced Netball Courts**
- ② **Access Node**
Located at the north east access point to the site, with entrance signage or unique sculptural element to direct users into the facility and enhance identity.
- ③ **Path Network**
Paths running throughout the site, connecting all the activity areas and improving movement around the space.
- ④ **Open Lawn Space**
Lawn area maintained around the skatepark for spectators. The area can be easily accessed from the multi-sport court and path network.
- ⑤ **Seating Areas**
Benches, picnic settings and shelters, located between the resurfaced netball courts and the multi-sport court.
- ⑥ **Multi-Sport Court**
Open court with basketball and futsal options, open spaces for four-square and other play markings, seating, lighting and colours/graphics to enhance the identity of the facility.
- ⑦ **Table Tennis Table**
Open area with table tennis and seating.
- ⑧ **Parkour / Climbing Area**
A network of vaults, bars and trampolines with softfall rubber surfacing, providing informal climbing/fitness activities to the west of the multi-sport court.
- ⑨ **Fitness Station**
A series of gym/fitness equipment on softfall rubber surfacing located along the east side of the multi-sport court.
- ⑩ **Expanded Playspace**
Playspace expanded with additional adventure and social play elements.
- ⑪ **Pump Track**
A series of flowing pump bumps and berms for scooter and skateboard riding. Complements the existing skate facility by providing a different style of riding.
- ⑫ **Renovated Toilet Facilities**
Toilet facilities to be upgraded (in style similar to Riverstone Cemetery) and better integrated into the space.
- ⑬ **Existing Building & Skatepark**
Retained and linked with the path network to increase interaction with active space.







Play in Blacktown City – a journey









Play in Blacktown City – a journey

Lessons so far:

- Assess and have others assess how we are being exclusive.
- Bring into play the resources at our disposal:
 - community, Councillors, all budgets.
- Break down the premise that play only happens at playgrounds.
- We must advocate for more and better whole-of-community play opportunities!

Play in Blacktown City – a journey

Future:

- Help!
- Share your stories with us:
 - Planning for kids in CBD plazas
 - Planning for kids in CBD streets
 - Delivering great outcomes for kids in CBD plazas
 - Delivering great outcomes for kids in CBD streets
- Improved, direct engagement with children and youth!

*“Are we there yet?”
Are we there yet?”*

nope!



Blacktown
City Council

Thank you!

Matt O'Connor, Manager Recreation Planning and Design
Blacktown City Council, Sydney NSW

matthew.oconnor@blacktown.nsw.gov.au

0437 183 668

LinkedIn (not very good at it yet!)

